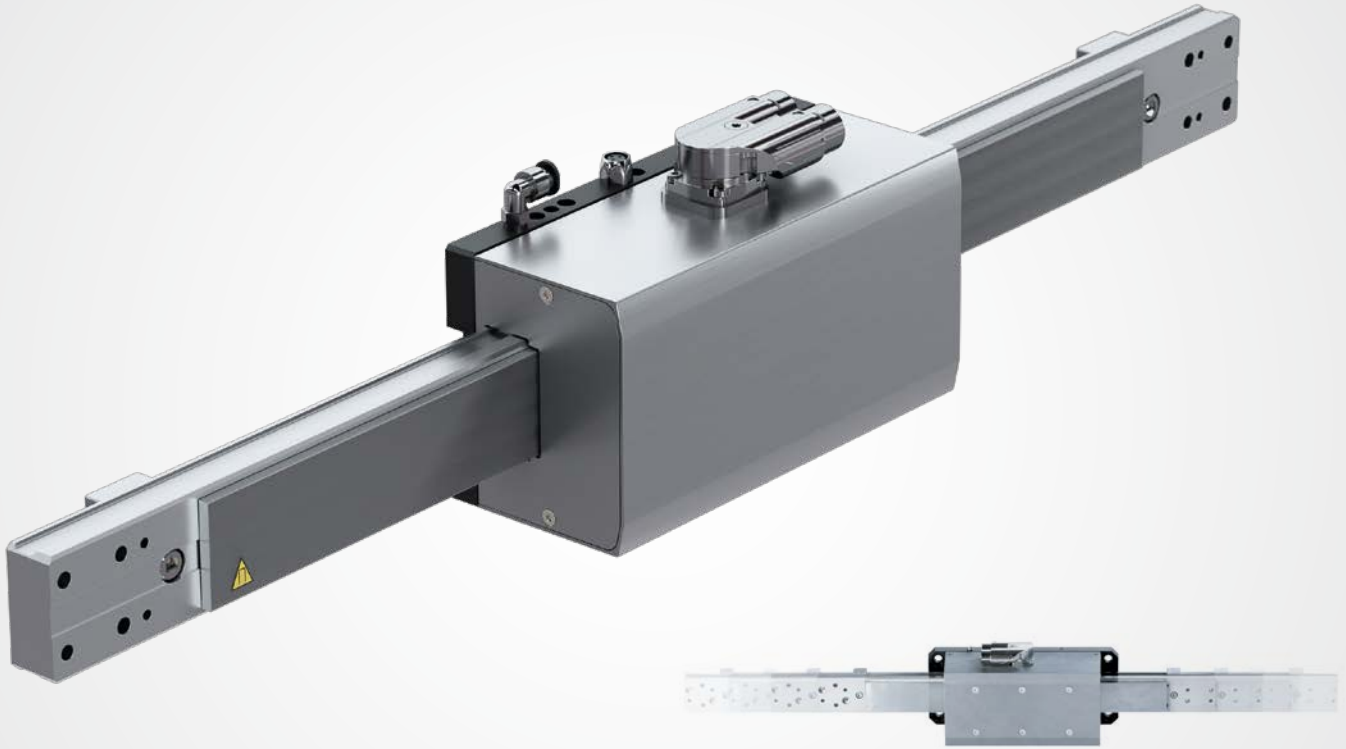


# HL

LINEAR MOTOR AXES | HL LINEAR AXIS



Various strokes up to 450 mm

## THE HIGHLY DYNAMIC LINEAR MOTOR AXIS HL

### OPTIONS AVAILABLE

- Tool connector; electrical and pneumatic supply is accessible
- Automatic grease pump for applications without maintenance

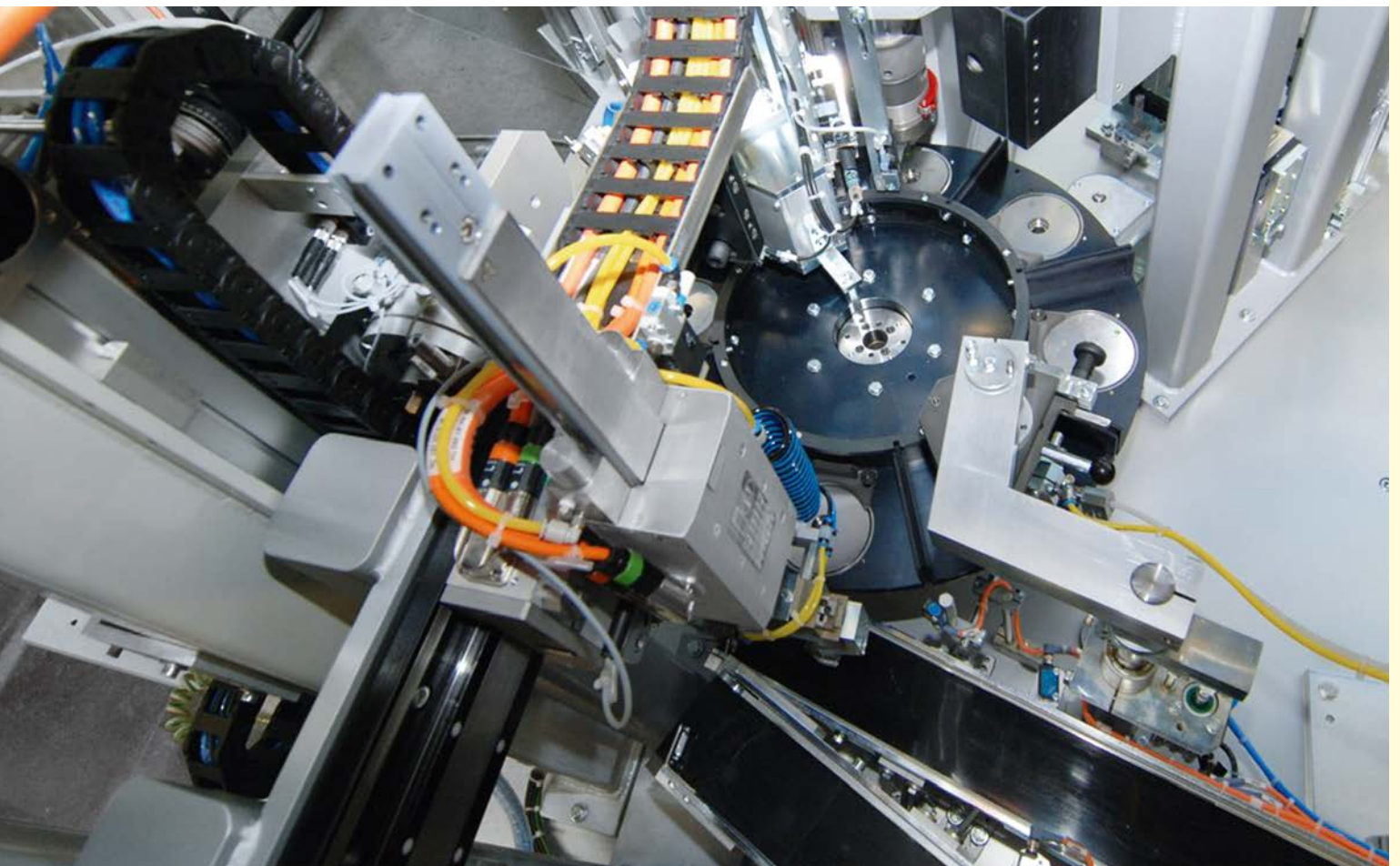


### FREELY AND INTUITIVELY PROGRAMMABLE

W.A.S. 2 – WEISS Application Software: secure and fast commissioning with free-of-charge user software.



OKU relies on the perfect combination of HN and HL axes for its ball bearing assembly cell. User-programmable linear motor axes are the ideal choice for extremely fast process movements and strict requirements in terms of both dynamic performance and precision.



The linear motor axis HL provides, without any doubt, the most modern drive technology which is highly integrated and ready to mount. Tight and precise recirculating ball bearings and an absolute measurement system as well as the automatic lubrication are all included in this product. The result: Rapid and harmonic movements, horizontal or vertical mounting and loading on the right or left side is possible.

---

## ADVANTAGES

- User programmable
- Extremely high dynamic performance thanks to direct drive
- Long lifetime
- Low maintenance costs
- Low energy costs
- Compact design – low weight
- Stiff mechanical assembling
- Very good repeat accuracy

---

## GENERAL INFORMATION

- In the HL model range, as little mass as possible is moved due to the moving guide rail. The axes then meet the requirements of vertical applications very efficiently
- All motors are equipped with overtemperature protection (PTC)
- The installation location of the HL axes can be freely chosen

---

## OPTIONS

- Absolute measuring systems
- Holding brake
- The linear axes can be equipped with manual or automatic lubrication
- Functional safety (secure encoder attachment)