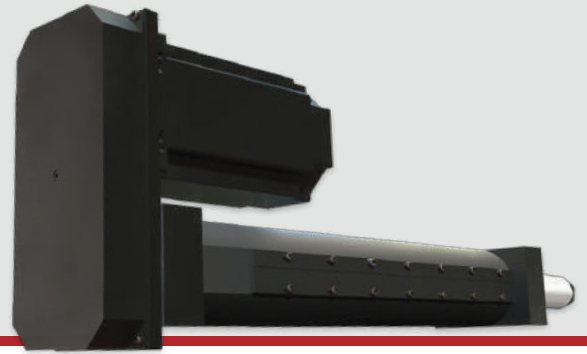


PRODUCT ORDERING GUIDE


# Eliminator Series SS

SUPER SPEED



Custom products are available.

Contact [sales@edriveactuators.com](mailto:sales@edriveactuators.com) with your requirements.

BASE NUMBER					OPTIONS					SPECIAL								
S	S	4	5	4	-			-			-							
<b>Base No. (Capacity)</b> SS454 (2,000 lbf)					<b>Unit Mounting Option</b> MB: Bottom Mount FF: Front Flange MF: Foot Mount TF: Front Trunnion TR: Rear Trunnion					<b>Motor Position</b> 1, 2, 3, 4 0 = In-Line 					<b>Custom Length (in)</b> 00.00			
<b>Std. Stroke Length</b> 12: 12 in. 18: 18 in. 24: 24 in. 30: 30 in. 36: 36 in. 42: 42 in. 48: 48 in.					<b>Rod End Option</b> E: Female Eye F: Female Thread A: Self-Aligning Coupler M: Male Thread S: Spherical Rod Eye					<b>Gearbelt Reduction</b> 00: In-Line/Direct Coupled 10: 1:1 20: 2:1					<b>N.C. Switch Qty</b> 0, 1, 2, 3, etc.			
<b>Configuration</b> L: In-Line U: Parallel Offset					<b>Switch Type</b> A: Hall Sourcing PNP B: Hall Sinking NPN C: Reed D: Switch Tracks / No Switches X: Solid Cover / No Switches					<b>N.O. Switch Qty</b> 0, 1, 2, 3, etc.								

For applications support contact us today.

[sales@edriveactuators.com](mailto:sales@edriveactuators.com)

FB6152